

RESPONSIVE

We listen. We're responsive.



Gamma 130 / 160®

Heterogeneous multi-layered flooring

Gamma® shades



212 - 31

Morning Glory



103 - 2

Moon Flower



103 - 15

Sun Downer



216 - 3

Terry Blue



332 - 61

Iceberg White



306 - 24

Pale Brown



335 - 61

Honeydew



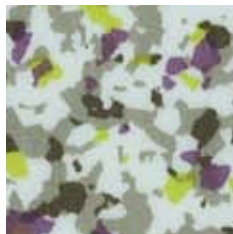
410 - 24

Marigold Yellow



357 - 14

Blue Hawaii



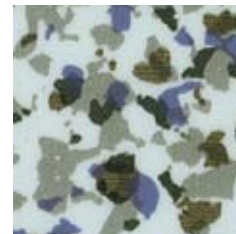
357 - 51

Chachacha



357 - 3

Palace Breeze



357 - 15

Blue Blazer



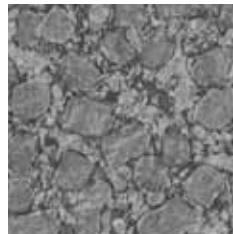
356 - 61

Shamrock



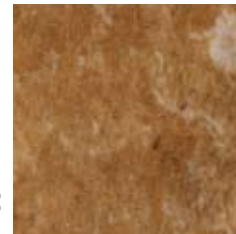
356 - 5

Ocean Pebble



356 - 17

Rugged Pool



216 - 4

Amber Moon



410 - 4

Persian Orange



332 - 60

Wheat Bran



306 - 4

Nectarine Hue



335 - 62

Earthen Hue



Gamma® shades



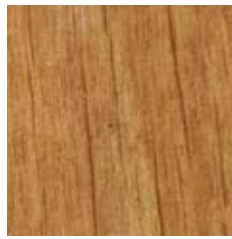
Highball

335 - 60



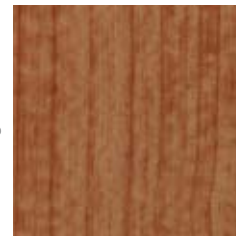
Apricot Hue

347 - 61



Carrot Orange

417 - 61



Lotus Breeze

410 - 47



Goldeneye

347 - 60



Moonwalk

355 - 32



Planter's Punch

355 - 91



Jungle Juice

355 - 35



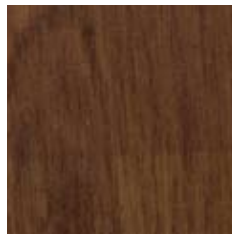
Copper Hue

355 - 60



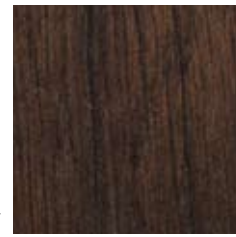
Silver Lace

417 - 1



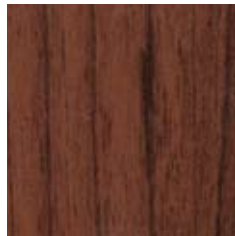
Sepia

410 - 60



Blanco Ibis

417 - 91



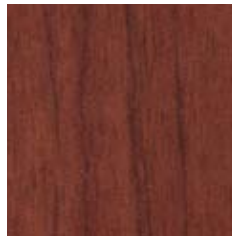
Tea Rose

306 - 1



Vine Leaf

410 - 35



Coral Bells

410 - 62



Prim Rose

212 - 10



Dark Prince

332 - 35

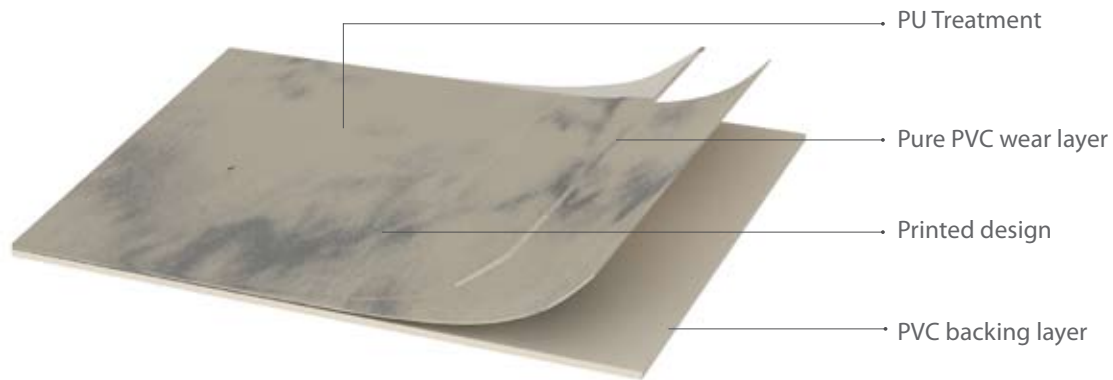


Black Velvet

347 - 58

Gamma® 130 / 160 product overview

Group T | **PU** | **R10**



Gamma® 130 is a multi-layered vinyl floorcovering, 1.30 mm thick with a 0.10 mm thick wear layer, available in sheets 2.00 m wide. The product comprises a compacted under layer reinforced with a glass fibre grid and a printed all-over design that is protected by a transparent wear layer.



Gamma® 130 is compact, heavy duty and durable. The flooring is anti-bacterial and anti-fungal, has a group T wear rating and is suitable for medium traffic areas.



Gamma® 160 is a multi-layered vinyl floorcovering, 1.60 mm thick with a 0.15 mm thick wear layer, available in sheets 2.00 m wide. The product comprises a compacted under layer reinforced with a glass fibre grid and a printed all-over design that is protected by a transparent wear layer.



Gamma® 160 is compact, heavy duty and durable. The flooring is anti-bacterial and anti-fungal, has a group T wear rating and is suitable for medium traffic areas.



Applications:

- Holiday accommodation: bedrooms and television room
- Staff accommodation
- Service areas
- Lobbies and waiting areas

Special Features:

- PU treatment
- Low cost easy maintenance
- Wide range of wood and marble designs
- Easy to use, easy to install
- Pure PVC transparent wear layer
- VOC compliant



Gamma® is VOC ($\leq 1/2$ Chronic REL) and formaldehyde compliant ($\leq 9.0 \mu\text{g}/\text{m}^3$) according to the CDPH/EHLB/Standard, Method V1.1-2010 (certificate 120316-01).

ISO 9001, 2008

ISO 14001, 2004

Gamma® 130 / 160 technical specifications

description

performance

Characteristics	Standards	Units	Gamma 130®	Gamma 160®
Description			Multi-layered heterogeneous vinyl	
General performance	BS EN ISO 10874: 2012	Class	23 - 31	
	BS EN 649 : 2011	Group	T	
Usage			Domestic and light commercial use	
Special treatment			Easy maintenance PU treatment	
Overall thickness	EN 428	mm	1.30	1.60
Thickness of wear layer	EN 429, ASTM F410	mm	0.10	0.15
Weight	EN 430	g/m ²	2280	2720
Sheet size	EN 426	m (width)	2	
		m (length)	20	
		m ² (surface area)	40	
Tile size	EN 427	mm x mm	300 x 300	
			500 x 500	
			610 x 610	
Abrasion resistance	EN 660 -2	Group	T	
	EN 660 -2	Volume loss mm ³	< 2	
	ASTM D3389 (Weight loss / 1000 cycles)	g	≤ 0.40	
Residual indentation	EN 433	mm	~ 0.03 (≤ 0.10)	
	ASTM F970 (800 psi)	inches	Avg. 0.001	
	ASTM F1914		Pass	
	DIN 51130		R 10	
Slip resistance	BS 7976-2 (pendulum method)		-	
	EN 13893	Coefficient of friction	-	
	ASTM D2047			
Dimensional stability	EN 434	%	≤ 0.40	
Flexibility	EN 435	mm	< 20	
Castor chair test	ASTM F137		Pass	
	EN 425	Type of use	Continuous	
Sound insulation	EN ISO 717-2	Δ Lw = dB	-	
Reaction to fire	EN ISO 9239-1: 2010	kW/m ²	≥ 8	
	EN ISO 11925-2: 2010		Pass	
	EN 13501-1:2007+A1: 2009	Class	Bfl - S1	
	ASTM E648-06	Type	1	
Static electrical propensity	EN 1815	kV	< 2.0	
Electrical resistance	EN 1081	Ω	10 ¹⁰	
Thermal resistance	ISO 8302 (EN 12664)	k/W m ²	< 0.00752	
Smoke density	ASTM 1514		Pass	
	ASTM E 662-05	Dm	< 450	
Colour fastness to light	EN ISO 105 - B02	Degrees	≥ 6	
Walking resonance	NF XPS 31 074		-	
Stain & chemical resistance	BS EN ISO 26987: 2012	Index	0 (Excellent resistance)	
Fungi & bacteria resistance	ASTM F925		Pass	
	(E1) PCP	%	-	
	ASTM G - 21		Does not favour growth	
	ASTM D3273		Pass	



The above data is valid at the time of print. For more details regarding technical specifications, handling and installation, please contact Responsive Industries Ltd.